

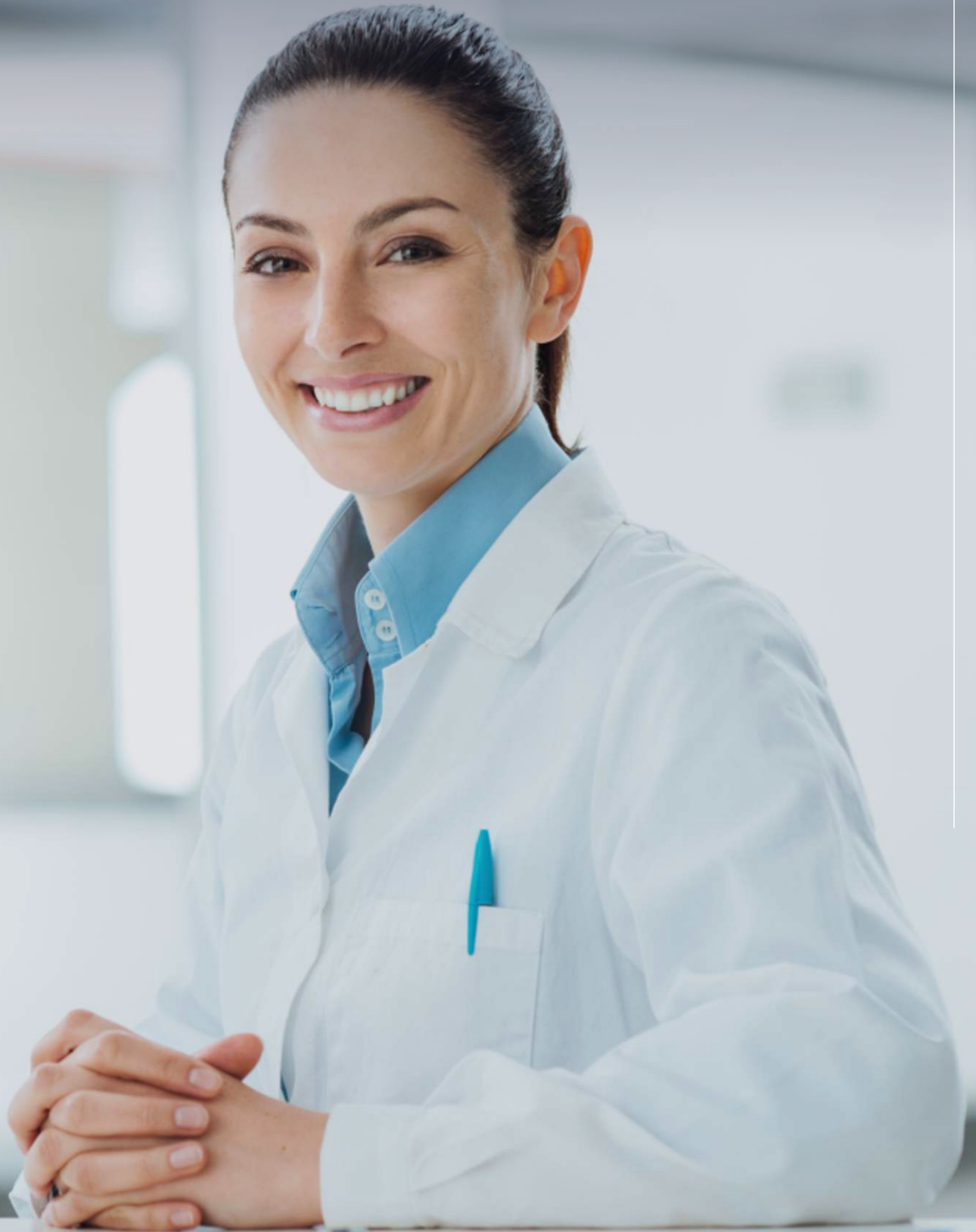


# Migration of infrastructure from the on-premise model to the **Microsoft Azure**



# Bioton

*Due to the need to optimize the on-premise infrastructure, the client has considered purchasing new servers or using new technologies to transfer the existing infrastructure to the Microsoft Azure.*



# MIGRATION OF INFRASTRUCTURE FROM THE ON-PREMISE MODEL TO THE MICROSOFT AZURE

While looking for the optimal solution, the client first considered feasible options, on the one hand, in terms of the security of their resources, and on the other, cost optimization. Based on the analysis of these two factors, he decided to migrate the infrastructure to the Microsoft Azure. Following that a workshop with a team of APN Promise specialists has taken place, during which we have showed the client how the environment would be configured and how the security would be imposed.



**The APN Promise Team migrated on a lift and shift basis. This means that servers that existed on-premises have been replicated to the public cloud. This is a typical example of using the IaaS (Infrastructure as a Service) model in developing a public cloud environment. The next step may be the transformation of virtual machines into services (PaaS - Platform as a Service and / or SaaS - Software as a Service).**

The option of relying on Microsoft's support, using the Azure Migration Program, has played a significant role in the client's decision. This is a program that allows the customer to transfer the on-premise environment to the public cloud at no cost, and fees are charged only for the Microsoft Azure service. At each stage of implementation, we have followed the best practice based on the Microsoft Cloud Adoption Framework.

During the analysis of the environment, together with the client, we have determined elements of the network layer and selected servers for migration. First of all, we have focused on the preparation of the landing zone, which is the result of the Azure environment with multiple subscriptions responsible for scale, security management as well as network and identity creation. The project has been completed in three months. It is a faster process, when compared to the implementation of the on-premise infrastructure.

The migration of the infrastructure to Microsoft Azure allowed updates to the environment and enabled use of new technologies which, on the one hand, ensure safety, and on the other hand, guarantee optimization of work and performance of the infrastructure. It translates directly into the operation of business, which is largely based on these mechanisms. The transfer of knowledge to the organization is also an inseparable element of the project. Training sessions for the IT department have been conducted, during which our specialists showed step by step how to go through parts of migration.





Follow Us   

A.P.N. Promise S.A. with registered office in Warsaw, address: ul. Domaniewska 44A, 02-672 Warszawa, entered in the Register of Entrepreneurs of the National Court Register by the District Court for the Capital City of Warsaw in Warsaw, XIII Commercial Division of the National Court Register under KRS no: 0000375933, holding no. NIP: 5210088682, REGON: 012521511, with share capital of PLN 1 015 358 (fully paid up).

 +48 22 355 16 00  [www.promise.pl](http://www.promise.pl) | [www.promise4cloud.com](http://www.promise4cloud.com)  [solutions@promise.pl](mailto:solutions@promise.pl)